

EQUIP. TYPE ~~R390A11R~~ EXP. NO.

COL. 540 7888 003

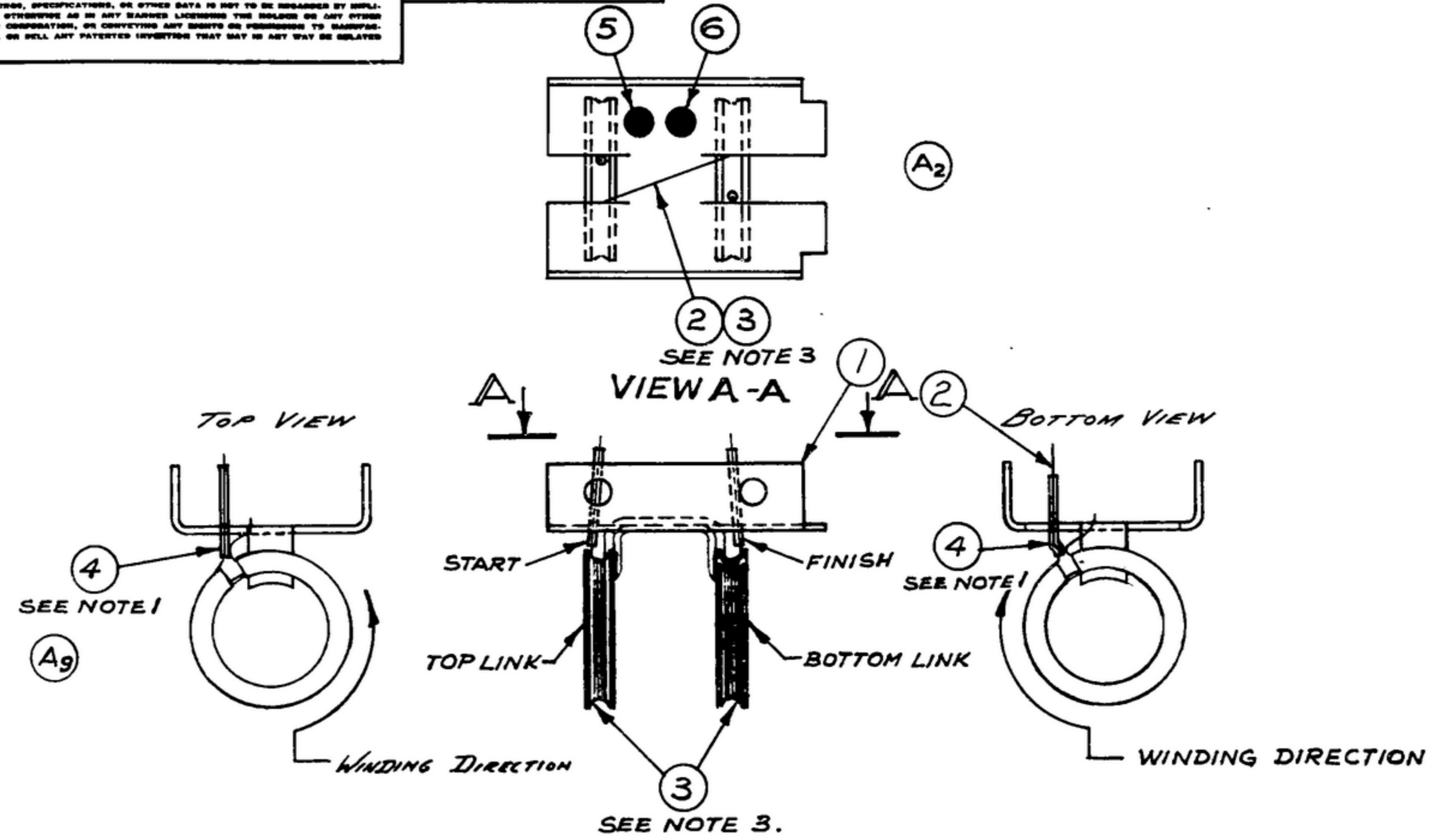
NOTICE: WHEN GOVERNMENT DRAWINGS, SPECIFICATIONS, OR OTHER DATA ARE USED FOR ANY PURPOSE OTHER THAN IN CONNECTION WITH A SPECIFICALLY RELATED GOVERNMENT PROCUREMENT OPERATION, THE UNITED STATES GOVERNMENT THEREBY ASSUMES NO RESPONSIBILITY FOR ANY COPIING, REPRODUCTION, OR IN ANY WAY SUPPLYING THE SAID DRAWINGS, SPECIFICATIONS, OR OTHER DATA TO BE UNLESS BY IMPLICATION OR OTHERWISE AS IN ANY REPRODUCED LICENSES OR ANY OTHER FORM OR COPIATION, OR CONVEYING ANY RIGHTS OR PERMISSIONS TO REPRODUCE, TRANSMIT, USE, OR SELL ANY PATENTED INVENTION THAT MAY IN ANY WAY BE RELATED THERETO.

THIS DOCUMENT HAS BEEN PURCHASED BY THE GOVERNMENT AND MAY BE REPRODUCED AND USED IN CONNECTION WITH ANY GOVERNMENT PROCUREMENT OR CONTRACTING OPERATION.

*FOR INFORMATION ONLY. CONTRACTOR MAY AT HIS OPTION DEVIATE FROM THESE PROCESS DETAILS.

*SWE APPROVAL
SYM PR 10042-17

REVISIONS			
SYM	DESCRIPTION	DATE	APPROVAL
A ₁₀	A ₁ -RENUMBERED NOTES; A ₂ -ADDED VIEW 'A-A' NOTATIONS & CALLOUTS; A ₃ -ADDED ITEMS 4, 5 & 6; A ₄ -ADDED NOTES 1, 2 & 5; A ₅ -REWORDED NOTE 3; PART NO. A27 WAS 'TRANSPARENT Q MAX. NO. 27'; A ₆ -NOTE 4 WAS 'SINGLE CONDUCTOR, E ₂ SILK MAGNET #28'; A ₇ -ITEM 3, 'LACQUER' WAS 'COATING MATERIAL'; A ₈ -SWE PART NO. REPLACED COLLINS PART NO.; A ₉ -ADDED VIEW OF SLEEVING; A ₁₀ -IN ITEM 2 DESCRIPTION WAS 'WIRE' & MAT'L SPEC WAS 'ASACB.6 & CB.7.'	16 DEC 59	A2428-PC-59-A1-51 REV'D. PME



WINDING DATA	
TOP LINK	2 TURNS
BOTTOM LINK	5 TURNS

- NOTES: (A₁)
- (A₄) 1. ALLOWING 1/2 INCHES FOR LEADS LENGTHS, INSERT 1/2 INCH SLEEVING UP TO "START" OF WINDING, & WIND REQUIRED NUMBER OF TURNS ON TOP & BOTTOM LINKS.
 - 2. INSERT 5/8" SLEEVING UP TO "FINISH" OF WINDING & ANCHOR BOTH LEADS TO BRACKET.
 - (A₅) 3. APPLY COATING MATERIAL (ITEM 3) AS SUPPLIED BY COMMUNICATIONS PRODUCTS CO. MARLBORO NEW JERSEY PART NO. A-27 WITH FUNGICIDE OR EQUAL, TO HOLD WINDING IN PLACE.
 - (A₆) 4. SINGLE CONDUCTOR, SINGLE SILK, HEAVY POLYURETHANE #28 MAGNET WIRE
 - 5. APPLY COLOR CODING LACQUERS (ITEM 5 & 6) LOCATED AS SHOWN.

*SWE PART NO.	ITEM	REQ'D	PART NO.	DESCRIPTION	MATL	MATL SPEC	NOTES
20S111266-5	6	AS REQ'D		LACQUER, YELLOW CODING		TT-L-31	5
20S111266-1	5	AS REQ'D		LACQUER, BLACK CODING		TT-L-31	5
	4	1	SM-B-249214	SLEEVING, SILICONE 1/8 IN.			1 & 2
20S110664-5	3	AS REQ'D		LACQUER			3
30S130219-28	2	1	SM-C-249082	WIRE, MAGNET, 10 3/4 IN.		MIL-W-583	4
	1	1	SM-C-249078	LINK ASSY			

LIST OF MATERIAL COLLINS PART NO. 558-0433-003

DRAWN JENNETT				CHECKED [Signature]		APPROVED		COLLINS-RADIO-CO. CERAS-BANGOR, MESA 14214-PH 51-93		DEPARTMENT OF THE ARMY SIGNAL CORPS ENGINEERING LABORATORIES PORT MONMOUTH NEW JERSEY SM-C-249082	
UNLESS OTHERWISE SPECIFIED: DECIMAL DIMENSIONS INCLUDING HOLE SIZES MAY VARY ±.005 FRACTIONAL DIMENSIONS INCLUDING HOLE SIZES MAY VARY ±1/64 MACHINED ANGLES MAY VARY ±.1° SHEARED ANGLES MAY VARY ±.25° BROKEN ANGLES MAY VARY ±.1° ECCENTRICITY BETWEEN ANY DIAMETERS ON THE SAME CENTERLINE SHALL NOT EXCEED .010 TOTAL INDICATOR READING. ALL DIMENSIONS ARE FINISH DIMENSIONS INCLUDING APPLIED FINISH AND ARE GIVEN IN INCHES.								REVIEWED PME			
558-0420-002 + SM-B-249069 30S130219-28								APPROVED HLY PME			
-COLLINS NO. QTY NEXT ARMY USED ON								DATE 29 DEC 55 SCALE 2/1			
APPLICATION											